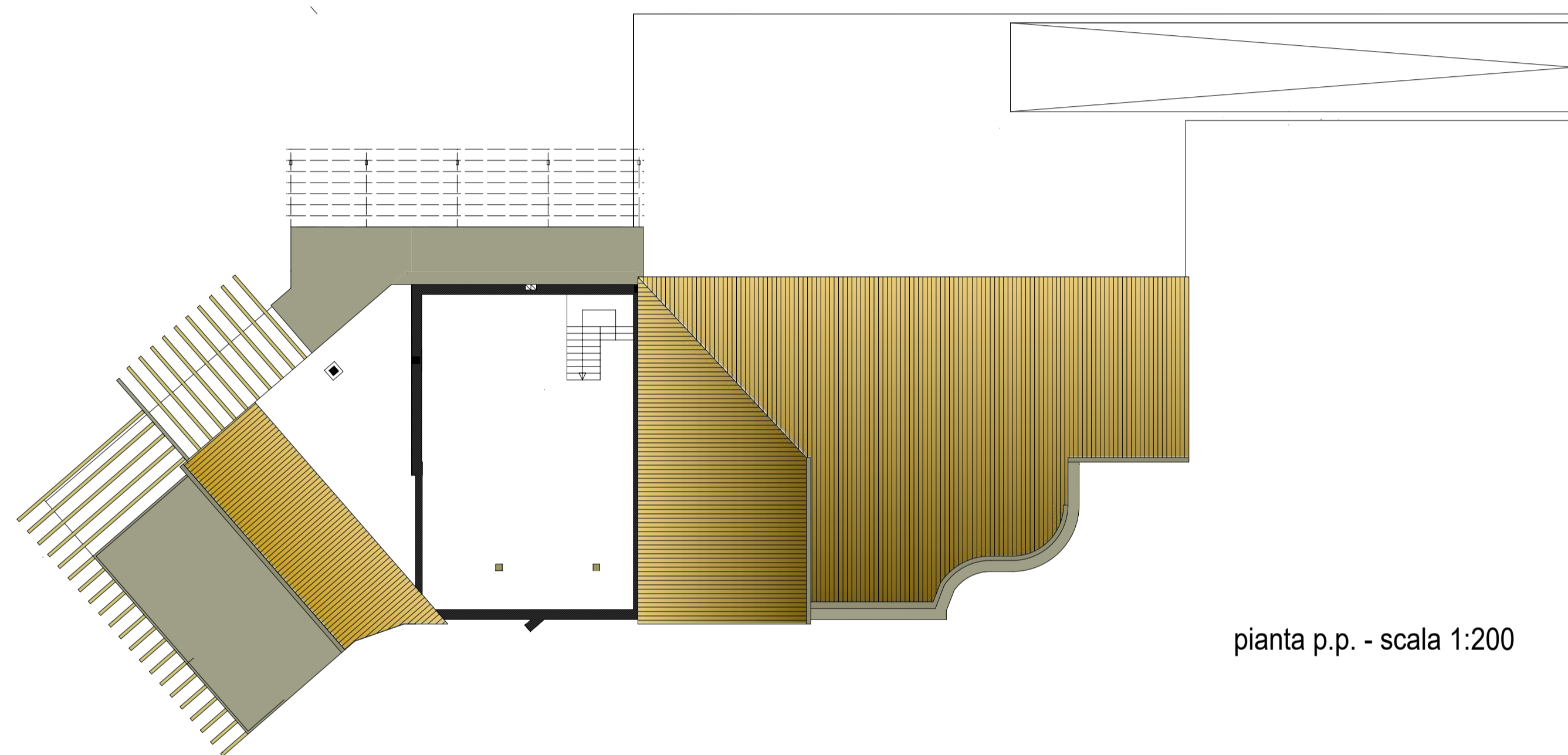
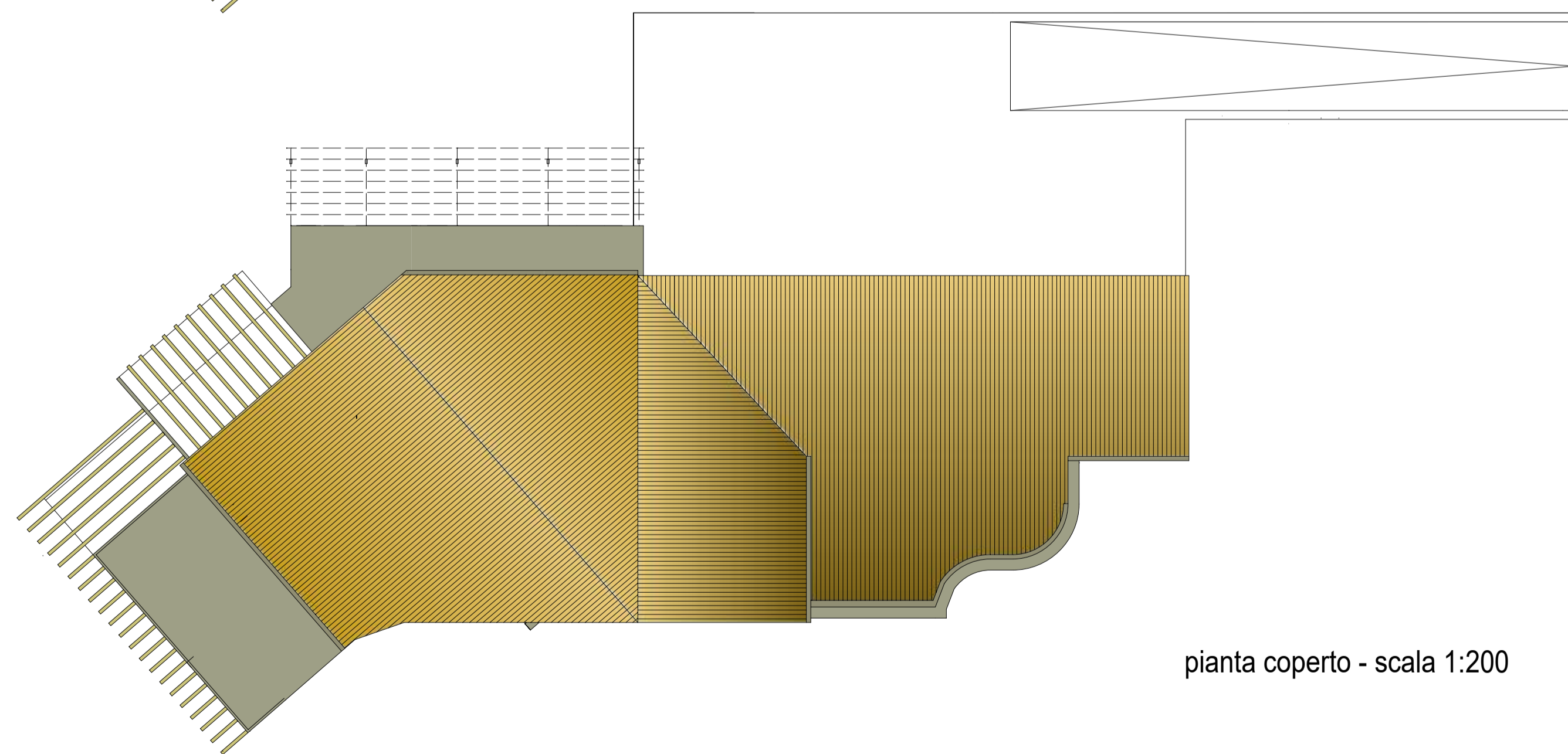


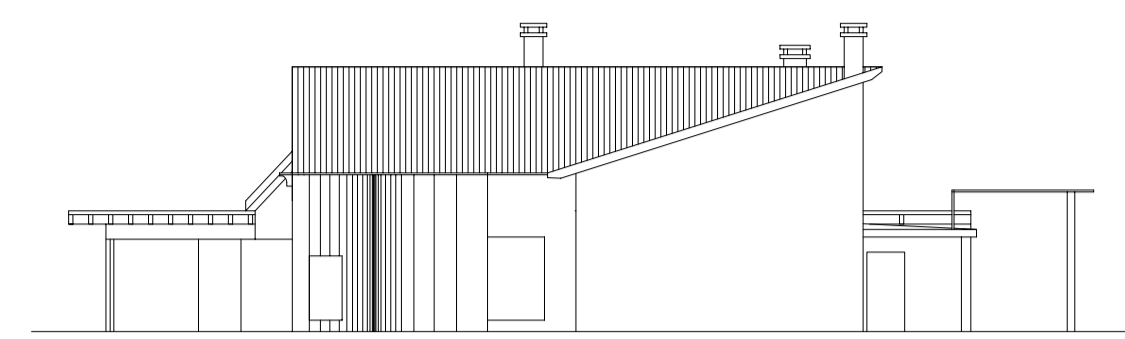
pianta p.t. - scala 1:200



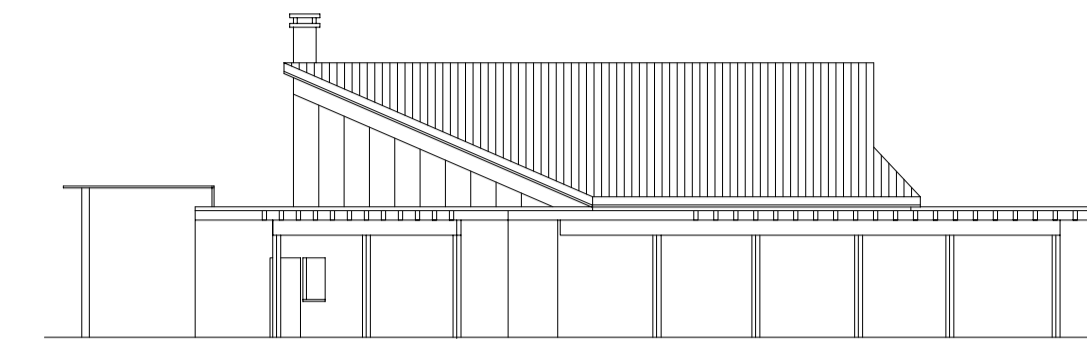
pianta p.p. - scala 1:200



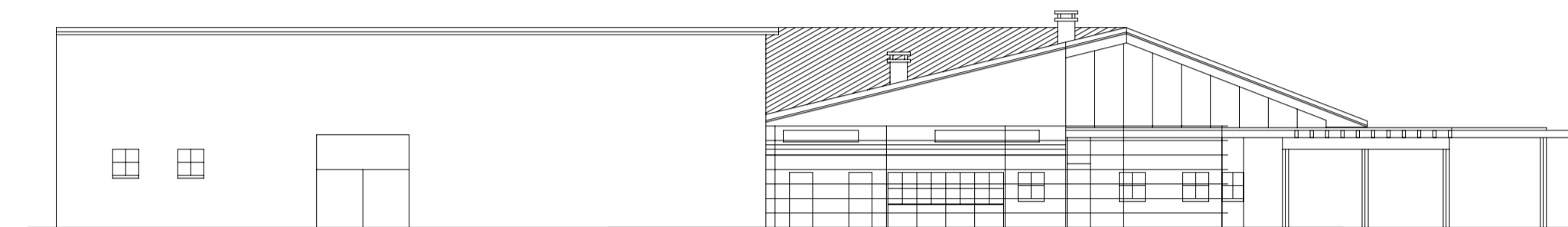
pianta coperto - scala 1:200



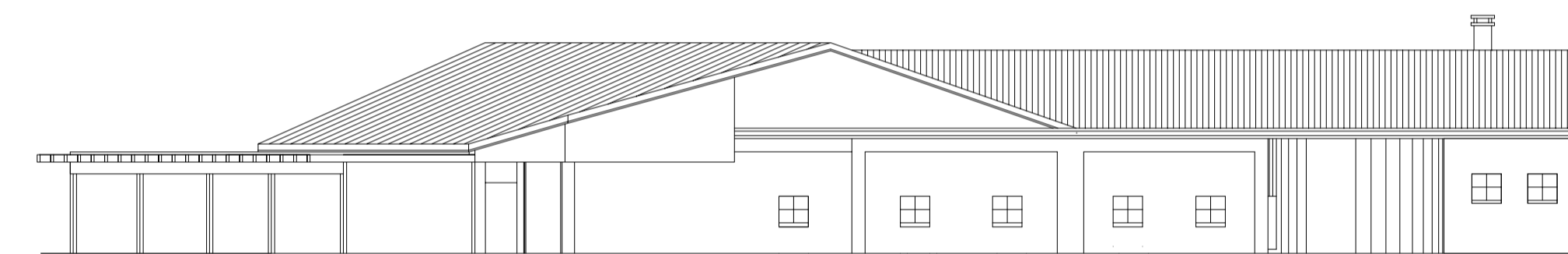
prospetto ovest - scala 1:200



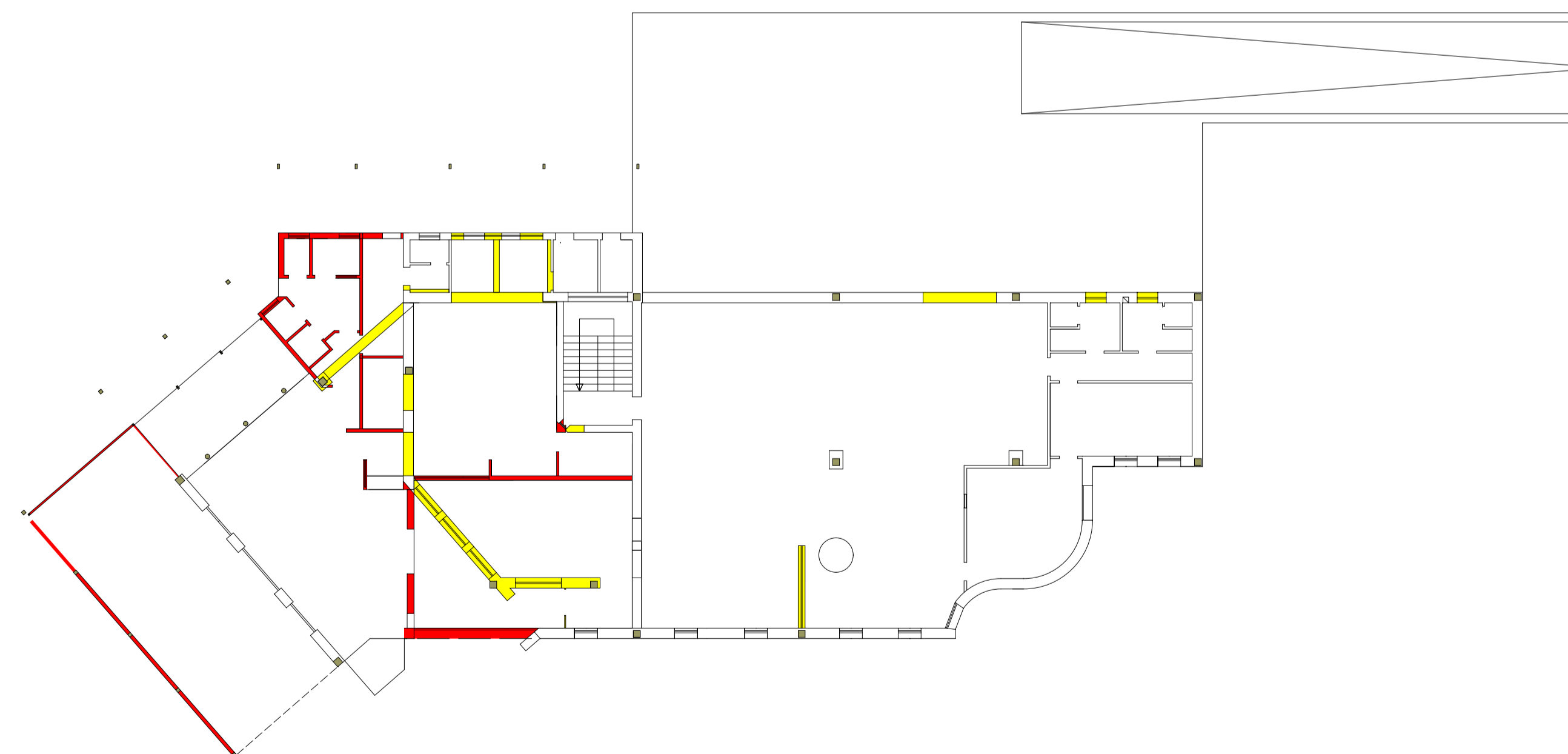
prospetto est - scala 1:200



prospetto sud - scala 1:200



prospetto nord - scala 1:200



quadro sinottico p.t. - scala 1:200

COMUNE DI ALONTE
provincia di vicenza

PIANO DI RECUPERO E DI
RIQUALIFICAZIONE URBANA
AREA CANTINA "VINI CRIS"
(art. 20 L.R. 11/2004)

TAVOLA 5
- progetto: piante e prospetti
- quadro sinottico piano terra

Ristopoint srl.	IL SINDACO: dr. L. Adami	LT.A progetto: arch. luigi tassoni alonte - vi - luigitassoni55@gmail.com
DATA: 18.10.2017	IL TECNICO COM: arch. A. Dovigo	